

GelDoc Go Imaging System

Go Further

BIO-RAD

Big Impact. Small Footprint.

Benchtop imaging, simplified. All the functionality you expect, with none of the complexity.

QuickSight
CAMERA

Capture sharp and crisp images using Bio-Rad's latest scientific camera technology.



White Tray
(Optional)



Blue Tray
(Optional)



UV/Stain-Free Tray
(Included)

Smart Tray Technology automatically adjusts imaging parameters and software options for nucleic acid and protein gels.

Simple Benchtop Imaging



1

Select from optimized preset settings for your gels



2

Click **Acquire** to capture an image



3

Print or **export** your image in your choice of multiple file types

Ready, Set, GelDoc Go

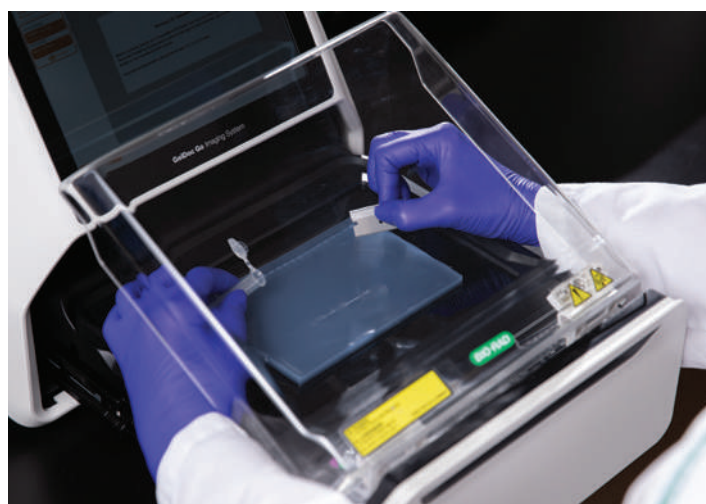
Versatile Applications



Large imaging area in a compact package

Don't let the small footprint fool you — the GelDoc Go Imaging System is compatible with small- and large-format DNA gels.

For high-throughput applications, capture images of up to four mini gels at once.



Safe gel excision, no matter your stain

Perform gel excision directly on the instrument. The optional UV Shield protects the user when working with traditional DNA stains.

Use the optional Blue Tray for easy direct excision when working with safe stains.

Supported Stains

Protein gels

- Stain-Free gels
- Oriole Fluorescent Gel Stain
- Silver stains
- Coomassie Blue stains
- Coomassie Fluor Orange Stain
- SYPRO Ruby Stain

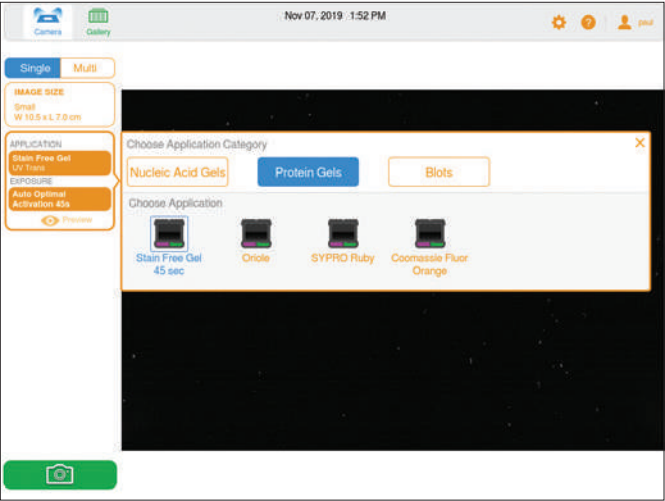
Nucleic acid gels

- Ethidium bromide
- SYBR® Green
- SYBR® Safe
- SYBR® Gold
- GelRed Stain
- GelGreen Stain
- Fast Blast DNA Stain
- UView Stain

Blots

- Stain-Free blots
- Colorimetric blots
- Ponceau S stain

Intelligent Software Packages Designed to Work Together

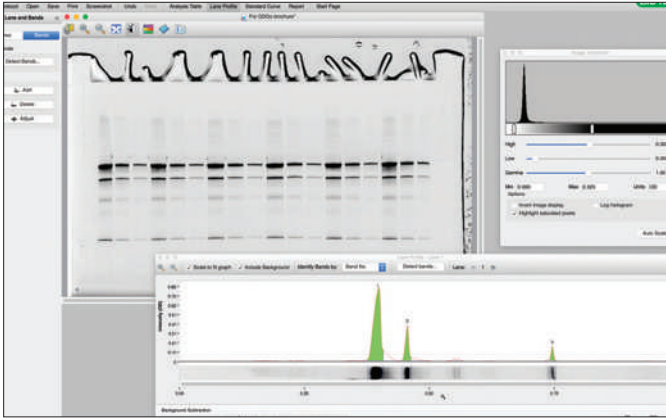


Intuitive image capture with Image Lab Touch Software

Quickly set up the GelDoc Go System to capture your image, add notes, and export or print.

Closely examine your images by pinching and zooming and by adjusting the transform via the touch-screen controls.

Easily manage user accounts and set permissions and security options.



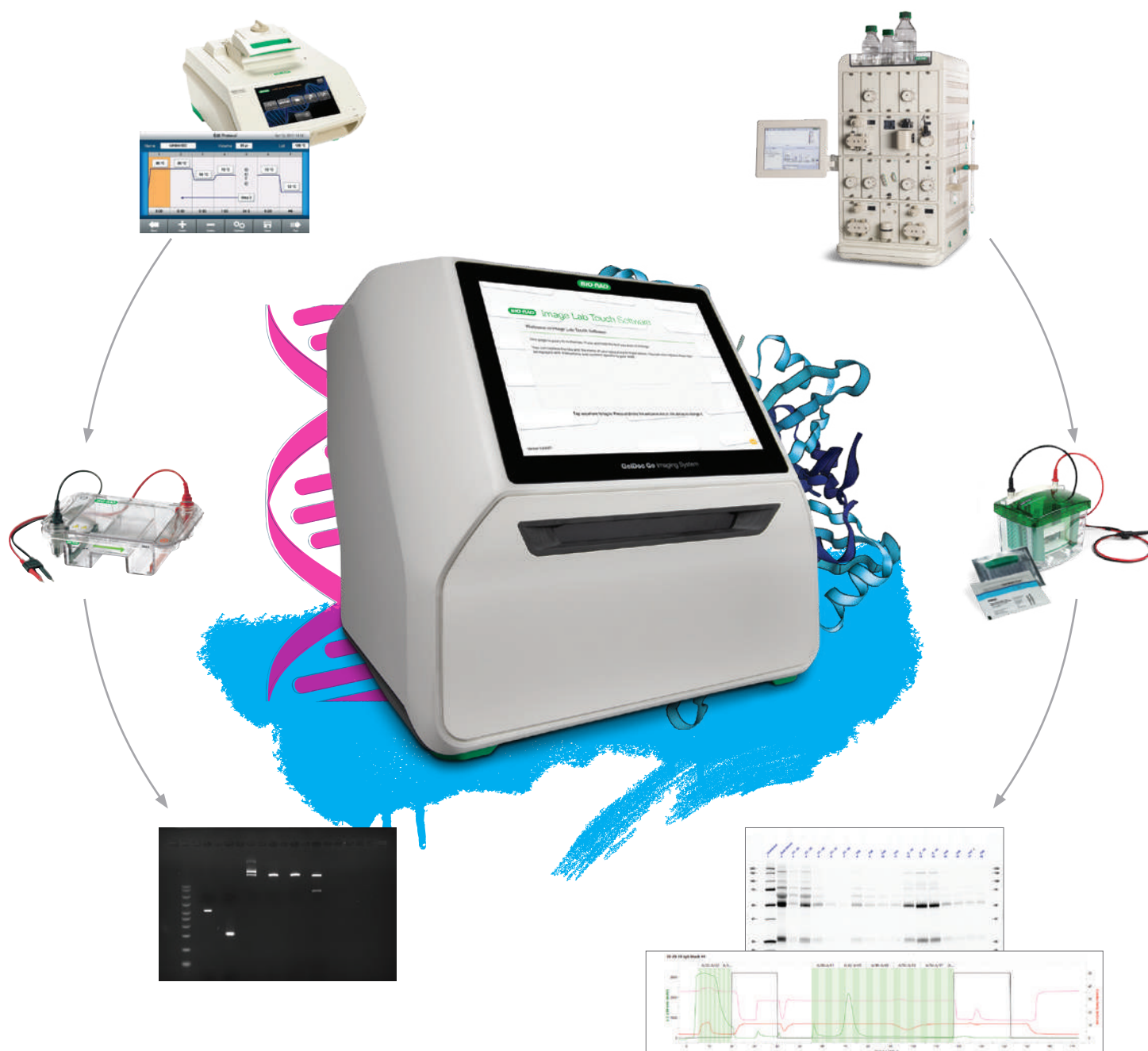
Powerful analysis with desktop Image Lab Software

Image files can be opened in Image Lab Software for accurate, in-depth analysis of your gel data.

Analyzed data can be exported to a spreadsheet or archived in an electronic laboratory notebook.

Advanced security options and regulatory compliance features allow you to maintain an unbroken chain of data custody, from capture on the GelDoc Go System through analysis at your computer.

Complete Solutions for Your Needs



Seamless integration into nucleic acid and protein workflows

The GelDoc Go System works with the Bio-Rad products you trust to provide complete solutions for nucleic acid and protein research. Use the C1000 Touch Thermal Cycler and Sub-Cell GT Electrophoresis Cells with the GelDoc Go System to generate and analyze PCR products. For protein workflows, pair the GelDoc Go System with precast gels and Mini-PROTEAN Tetra Vertical Electrophoresis Cells to assess fractions from the NGC Chromatography System.



Specifications

Automation Capabilities

Smart Tray Technology	The GelDoc Go Imaging System automatically recognizes your application-specific tray and adjusts imaging parameters and software options accordingly
Auto-focus	Precalibrated focus for any zoom setting
Auto-exposure	Two auto-exposure algorithms (rapid or optimal)

Hardware Specifications

Touch-screen functionality	Multitouch capable Display resolution 1,024 x 768 pixels 9.7" (24.64 cm) display
Maximum image area (W x H)	21 x 14 cm
Detector	6.3 MP CMOS
Pixel size	2.4 x 2.4 µm
Bit depth (gray levels)	65,536
Dynamic range	>3.5 orders of magnitude
Excitation source	Trans-UVB (standard) Epi-white (standard) Trans-white (with optional White Tray) Trans-blue (with optional Blue Tray)
Emission filter	535–645 nm (standard)
Data output	16-bit or 8-bit: SCN, TIFF, JPEG image files
Instrument weight	~16 kg (~35 lb)
Instrument size (D x W x H)	44.8 x 36.0 x 35.3 cm
Operating voltage	100–240 VAC, 50–60 Hz
Operating temperature	10–28°C
Operating humidity	20–80% relative humidity (noncondensing)

Ordering Information

Catalog #	Description
Imaging System	
12009077	GelDoc Go Imaging System with Image Lab Touch Software
GelDoc Go Imaging System Trays	
12012165	White Tray for GelDoc Go Imaging System
12012160	Blue Tray for GelDoc Go Imaging System
12012189	UV/Stain-Free Tray for GelDoc Go Imaging System
Analysis Software	
12012931	Image Lab Software, on USB drive
17006130	Image Lab, Security Edition, 1 license
17006171	Image Lab, Security Edition, 5 licenses
17006172	Image Lab, Security Edition, 10 licenses
Optional Accessories	
12012164	UV Shield for GelDoc Go Imaging System
1708377	Holder for Sample Trays and UV Shield
1708185	XcitaBlue Viewing Goggles
12012190	GelDoc Go Gel Alignment Kit
12012147	GelDoc Go Imaging System IQ/OQ Kit
1708089	Mitsubishi Printer, 100/240 V, USB
1707581	Mitsubishi Thermal Printer Paper, 4 rolls
1703760	Gel Cutter Ruler

Visit bio-rad.com/LetsGo for more information.

BIO-RAD, MINI-PROTEAN, and SUB-CELL are trademarks of Bio-Rad Laboratories, Inc. in certain jurisdictions. SYBR is a trademark of Thermo Fisher Scientific Inc. TGX Stain-Free Precast Gels are covered by U.S. Patent Numbers 7,569,130 and 8,007,646. All trademarks used herein are the property of their respective owner.



**Bio-Rad
Laboratories, Inc.**

Life Science
Group

Website bio-rad.com **USA** 1 800 424 6723 **Australia** 61 2 9914 2800 **Austria** 00 800 00 24 67 23 **Belgium** 00 800 00 24 67 23 **Brazil** 4003 0399 **Canada** 1 905 364 3435 **China** 86 21 6169 8500 **Czech Republic** 00 800 00 24 67 23 **Denmark** 00 800 00 24 67 23 **Finland** 00 800 00 24 67 23 **France** 00 800 00 24 67 23 **Germany** 00 800 00 24 67 23 **Hong Kong** 852 2789 3300 **Hungary** 00 800 00 24 67 23 **India** 91 124 4029300 **Israel** 0 3 9636050 **Italy** 00 800 00 24 67 23 **Japan** 81 3 6361 7000 **Korea** 82 2 3473 4460 **Luxembourg** 00 800 00 24 67 23 **Mexico** 52 555 488 7670 **The Netherlands** 00 800 00 24 67 23 **New Zealand** 64 9 415 2280 **Norway** 00 800 00 24 67 23 **Poland** 00 800 00 24 67 23 **Portugal** 00 800 00 24 67 23 **Russian Federation** 00 800 00 24 67 23 **Singapore** 65 6415 3188 **South Africa** 00 800 00 24 67 23 **Spain** 00 800 00 24 67 23 **Sweden** 00 800 00 24 67 23 **Switzerland** 00 800 00 24 67 23 **Taiwan** 886 2 2578 7189 **Thailand** 66 2 651 8311 **United Arab Emirates** 36 1 459 6150 **United Kingdom** 00 800 00 24 67 23

